

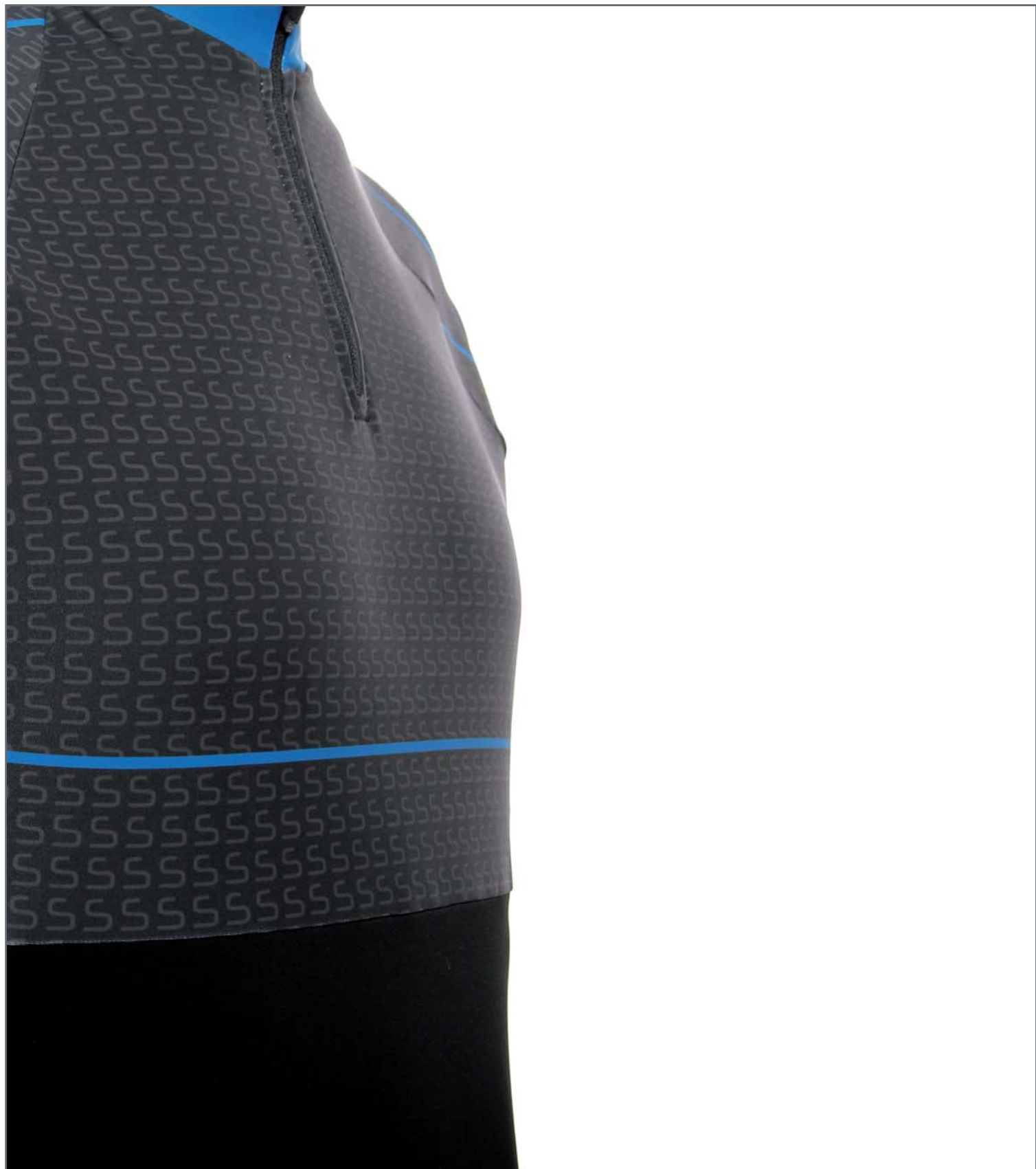
HR HURRICANE
RACING

SOULLIMIT[®]
technical sportswear



SKICOLLECTION





NORDIC*SKI*

NORDICSKI

SS10R GIACCA NORDICO PRS NORDIC PRS JACKET

Giubbino da sci nordico PRS, in tessuto elastico antivento e traspirante, con inserti in Super Roubaix elastico sulla schiena, interno collo in tessuto confortevole anti pilling e due tasche anteriori. Capo Personalizzabile

PRS nordic ski jacket, in breathable windproof elastic fabric, with elastic Super Roubaix on back, comfortable anti pilling inside neck and two frontal pocket. Customizable article.



SS10R
BBW



SS10R
BBLW



SS10R
BRW



SS10R
WBW



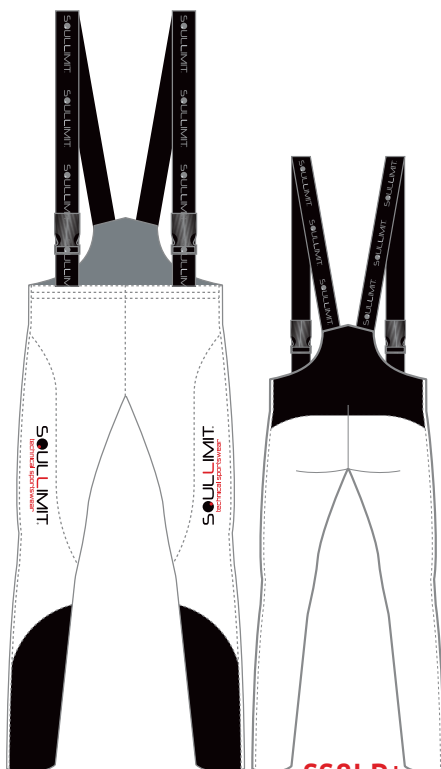
**SS8LR
BW**



**SS8LR
BRW**



**SS8LR
BBLW**



**SS8LR
WBW**

NORDICSKI

SS8LR PANTA NORDICO PRS NORDIC PRS PANTS

Panta da sci nordico PRS, in tessuto elastico antivento e traspirante, con inserti in Super Roubaix elastico sul posteriore, disponibile con bretelle o con elastico in vita, con zip sulla gamba. Capo Personalizzabile.



PRS nordic ski jacket, in breathable windproof elastic fabric, with elastic Super Roubaix on back, comfortable anti pilling inside neck and two frontal pocket. Customizable article.



NORDICSKI

SS10 GIACCA NORDICO NORDIC JACKET

Giubbino da sci nodico tecnico, in tessuto elastico antivento e traspirante con inserti ad elasticità variabile sull'anteriore, e microfleece sul posteriore. Dotato di due tasche a scomparsa sulla parte anteriore. Capo personalizzabile.

Cross-country technical jacket, in elastic windproof breathable fabric with variable elasticity inserts on the front, and microfleece on the back. It has two hidden pockets on the front. Customizable article.



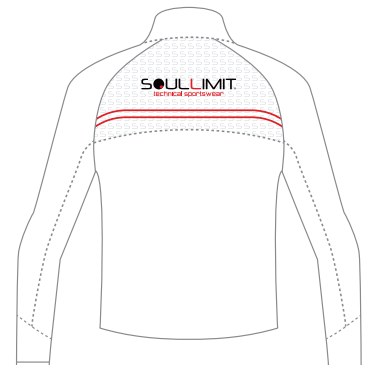
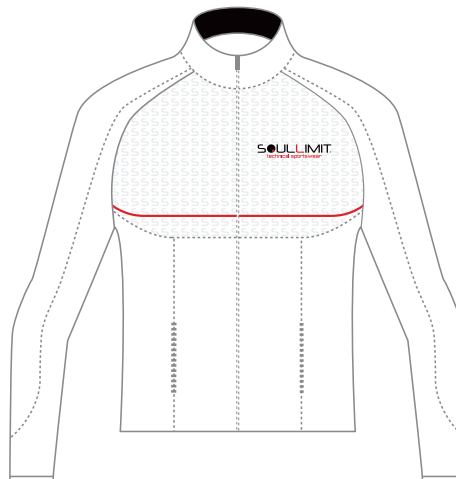
SS10
IBBW



SS10
IBLW



SS10
IBRW



SS10
IWBW

NORDICSKI

SS8L PANTA NORDICO NORDIC PANTS

Panta coprituta tecnico, in tessuto elastico antivento e traspirante sull'anteriore, e super-roubaix sul posteriore. Questo capo è dotato di bretelle regolabili, zip sul laterale delle gambe per sfilarle più agilmente. Capo personalizzabile.

Cross-country technical suitcover pants, in elastic, windproof and breathable fabric on the front, and super-roubaix on the back. This article has adjustable risers, two zips on the side of the leg to make fast undress easier. Customizable article.



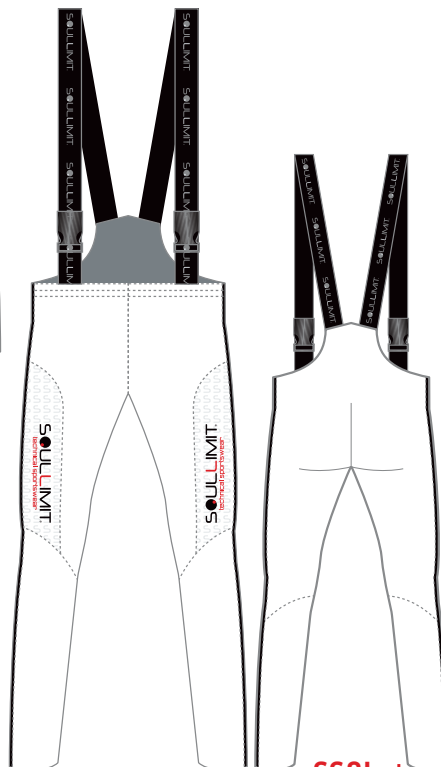
SS8L
IBBW



SS8L
IBRW



SS8L
IBLW



SS8L
IWBW

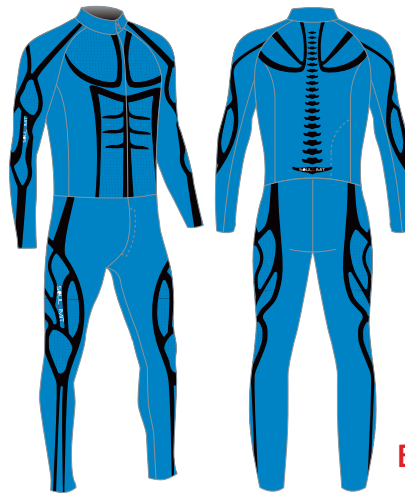


NORDICSKI

SS14 SS24 FULL PRINT

Tuta full print da sci nordico in Lycra Power completamente stampata e personalizzabile. Questa tuta ha una protezione in polipropilene per il busto e zip centrale. Disponibile intera e due pezzi.

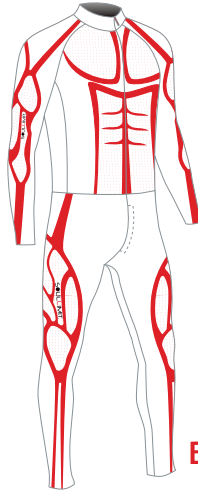
Lycra Power crosscountry ski full print racesuit full print customizable. This racesuit has a Polypropylene protection on frontal body and central zip. Available in full version and also in the two pieces version.



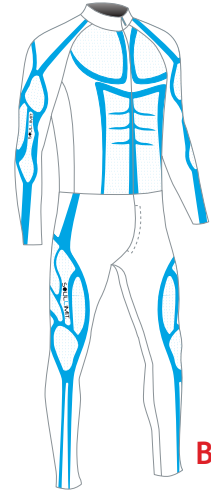
**BONES
BLB**



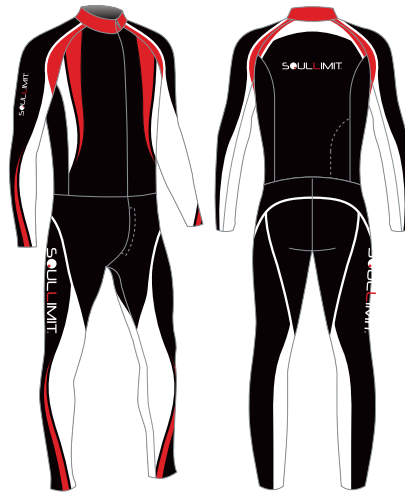
**BONES
RB**



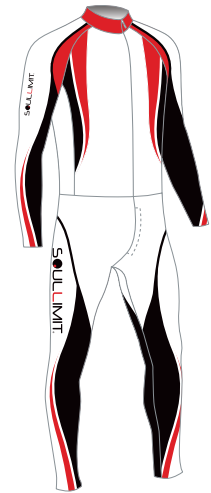
**BONES
WR**



**BONES
WA**



**FOG
BRW**



**FOG
WRB**

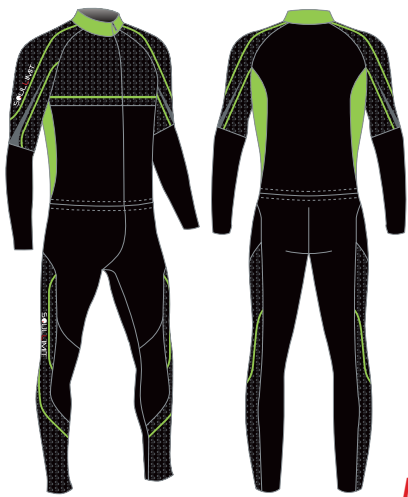


**FOG
AWB**

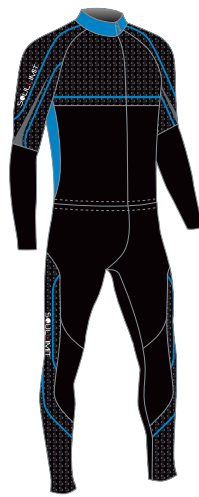


**FOG
GWGR**

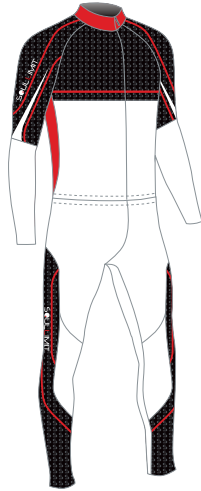




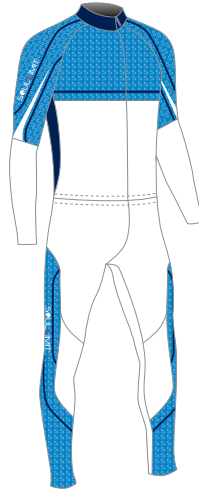
**ICE
BBGR**



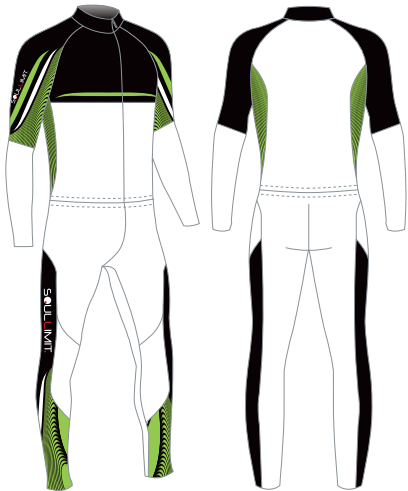
**ICE
BBA**



**ICE
BWR**



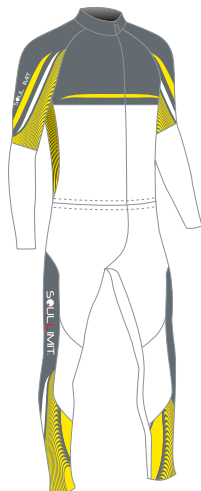
**ICE
BLWA**



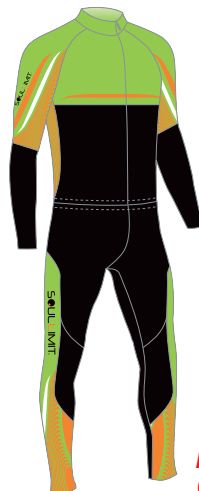
**MOBY
BWGR**



**MOBY
BBLR**



**MOBY
GWO**



**MOBY
GRBO**



NORDICSKI

SS15 SS25 **FRONT PRINT**

Tuta front print da sci nordico in Lycra Power con inserti e petto stampati e personalizzabili. Questa tuta ha una protezione in polipropilene per il busto e zip centrale. Disponibile intera e due pezzi.

Lycra Power crosscountry ski front print racesuit with inserts and chest printable and customizable. This racesuit has a Polypropilene protection on frontal body and central zip. Available in full version and also in the two pieces version.

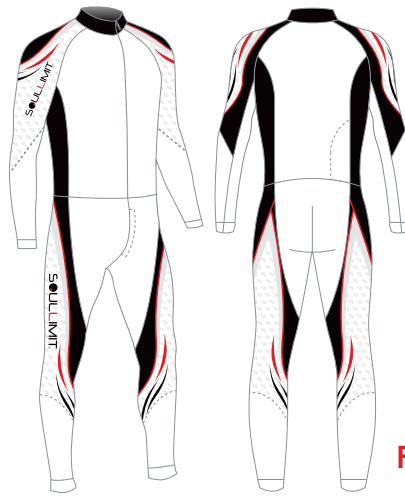


NORDICSKI

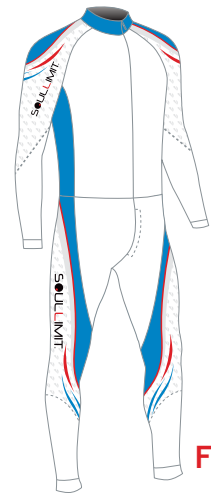
SS1 SS2 CLASSIC

Tuta classica da sci nordico in Lycra Power con inserti stampati e personalizzabili. Questa tuta ha una protezione in polipropilene per il busto e zip centrale. Disponibile intera e due pezzi.

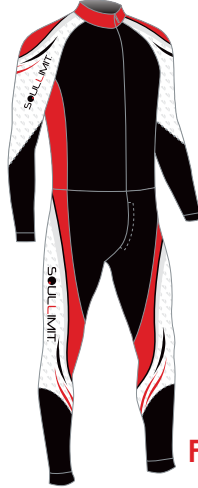
Lycra Power crosscountry ski classic racesuit with inserts printable and customizable. This racesuit has a Polypropylene protection on frontal body and central zip. Available in full version and also in the two pieces version.



**FLAME
WBR**



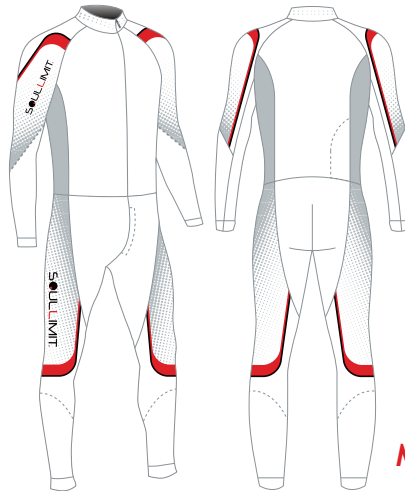
**FLAME
WAR**



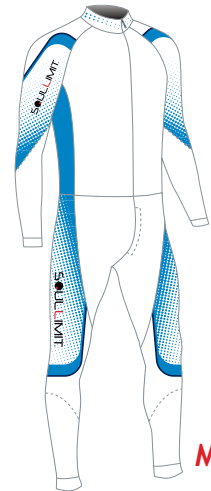
**FLAME
BWR**



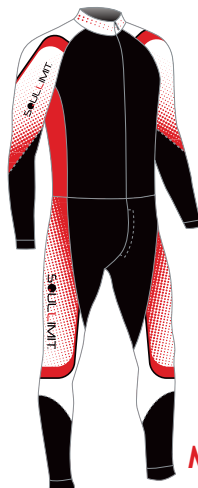
**SKIN
ABLR**



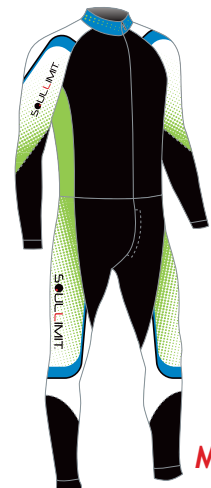
**MERCURY
WBR**



**MERCURY
WBR**



**MERCURY
WBR**



**MERCURY
WBR**



NORDICKSKI

SS1 **CCR**



Tuta CCR da sci nordico in Lycra Power con inserti stampati e personalizzabili. Questa tuta ha una protezione in polipropilene per il busto e zip centrale. Disponibile solo intera.

Lycra Power crosscountry ski CCR racesuit with inserts printable and customizable. This racesuit has a Polypropilene protection on frontal body and central zip. Available only in full version.



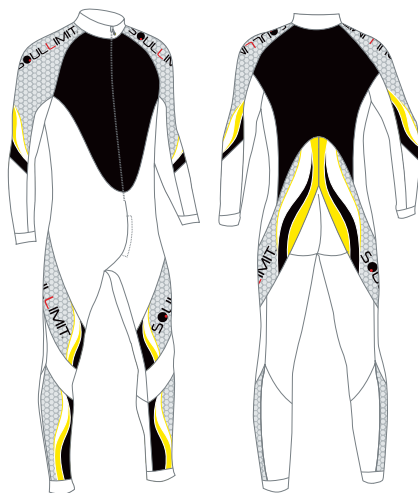
S
BLBL



S
BB



S
RR



S
YW



NORDICKSKI



•CONTROL+: E' una membrana antivento altamente traspirante con trattamento antiacqua, elastica e leggera. Ideale per mantenere un microclima costante tra pelle e tessuto, resistente e versatile, si adatta perfettamente ad ogni tipo di impiego.
 •CONTROL+: It is a highly breathable windproof membrane with waterproof treatment, flexible and light. Ideal for maintaining a constant microclimate between the skin and fabric, durable and versatile, it fits perfectly into any type of employment.



•LYCRA POWER: Il tessuto elastico per eccellenza, usato per i pantaloncini, garantisce la massima traspirazione, vestibilità perfetta e una maggiore potenza muscolare.
 •LYCRA POWER: The elastic fabric one for excellence, used for the shorts, guarantees the maximum perspiration a perfect comfort and a greater muscular power.



•SOUPER ROUBAIX: Tessuto elastico, scattante, traspirante, resistente, morbido e confortevole, con effetto micro pile interno per riparare dalle temperature fredde.
 •SOUPER ROUBAIX: Elastic super fabric, releasing, transparent, resistant, soft and comfortable, with micro fleece effect inside for a great cold-weather covering.



•APETEX: E' uno speciale accoppiato tecnico bielastico con membrana Respira con uno sviluppo tridimensionale per favorire una tenuta superiore della temperatura corporea, adatto alle temperature più avverse.
 •APETEX: It is a special technical bi-elastic membrane coupled with breathing three-dimensional development required to support a higher body temperature, suitable for the most extreme temperatures.



•MICRO10: E' un materiale con membrana windproof e traspirante, con un tessuto ad alta resistenza e con trattamento idrorepellente nella parte esterna e caldo Pile nella parte interna.
 •MICRO10: It is windproof and breathable material with membrane a fabric with high strength and outside water-repellent treatment and warm fleece on the inside.



•REFLEX: Il rifrangente aumenta la visibilità della persona che lo indossa riducendo il pericolo di incidenti dovuti alla scarsa visibilità. Combinando la performance con la luminosità e la flessibilità, il nostro materiale rifrangente massimizza la protezione senza compromettere il comfort dell'indumento.
 •REFLEX: The reflector increases the visibility of the person wearing it, reduces the risk of accidents due to poor visibility. Combining performance with the brightness and flexibility, our reflective material maximizes protection without sacrificing comfort of the fitting.



•GEL-GRIP: E' la banda elastica applicata sul fondo di maglie e pantaloni che grazie a una striscia di gel al silicone aderisce perfettamente sia al corpo che ad altri tessuti senza causare irritazioni e segni sulla pelle.
 •GEL-GRIP: It's an elastic band applied on the bottom of the jerseys and shorts, thanks to a silicon gel strip joins perfectly to the body that to the other woves without to cause to irritations and signs on the skin.



•ELASTIK: Micro tessuto stretch, liscio con elasticità bidirezionale molto ampia, che dà la possibilità di usufruire del capo usando molto aderente al corpo come una seconda pelle favorendo tutti i movimenti.
 •ELASTIK: Micro stretch fabric, smooth with very wide bidirectional elasticity, which gives the possibility to use the head by using it very close to your body like a second skin promoting all movements.



•CERAMIC: Materiale con speciale spalmatura in ceramica anti abrasione e antitaglio.
 •CERAMIC: Material with special ceramic coating abrasion and cut resistant.



•KARDAK: Materiale speciale anti abrasione grazie ad una fibra a base nylon molto resistente.
 •KARDAK: Special fabric high density fiber-based strength nylon.



•REVOLUTIONAL: Tessuto di ultima generazione, Revolutionary Gloss è in grado di soddisfare diverse esigenze: ultrafine con uno spessore ridotto del 50% rispetto ad un classico tessuto charmeuse, leggerissimo pesa solo 145 g/mq perfettamente coprente, eccezionalmente elastico e perfect fit, anti-pilling, traspirante, resistente alla sabbia e ai raggi UV (UPF 50+), grazie all'utilizzo di Xtra-Life LYCRA.
 •REVOLUTIONAL: Fabric latest Revolutionary Gloss is able to meet several requirements: ultrafine with a thickness reduced by 50% compared to a classic charmeuse fabric, lightweight weighs only 145 g/mq, perfectly opaque, exceptionally flexible and perfect fit, anti-pilling, breathable, resistant to sand and UV rays (UPF 50+) with use of Xtra-Life Lycra. Revolutionary Gloss also offers good resistance to Velcro.



•15.000 WR: Resistenza alla penetrazione dell' pioggia battente in colonna d'acqua di 15.000 mm garantita fino a 15 ore di esposizione.
 •15.000 WR: Resistance to penetration of rain water into the column of 15,000 mm guaranteed up to 15 hours of exposure.



•20.000 WR: Resistenza alla penetrazione dell' pioggia battente in colonna d'acqua di 20.000 mm garantita fino a 20 ore di esposizione.
 •20.000 WR: Resistance to penetration of rain water into the column of 20,000 mm guaranteed up to 20 hours of exposure.



•20.000 BR: Capacità di far passare il vapore verso l'esterno di 10.000 gr./mq, garantendo una protezione dal vento e dall'acqua proveniente dall'esterno.
 •20.000 BR: Ability to pass the steam out of 10,000 g / sqm, providing protection from wind and water from outside.



•CUSTOM: Capo personalizzabile per team o piccoli gruppi sportivi, con stampe sublimatiche o applicazioni. Per le linee bike, running e triathlon quantitativo minimo di 10 pezzi per articolo, nella linea ski e sport invernali 5 pezzi minimi.
 •CUSTOM: Cape customizable for sports teams or small groups, with sublimation, or applications. For bike, running and triathlon line minimum quantity of 10 pieces per item, the ski line and winter sports 5 pieces minimum.